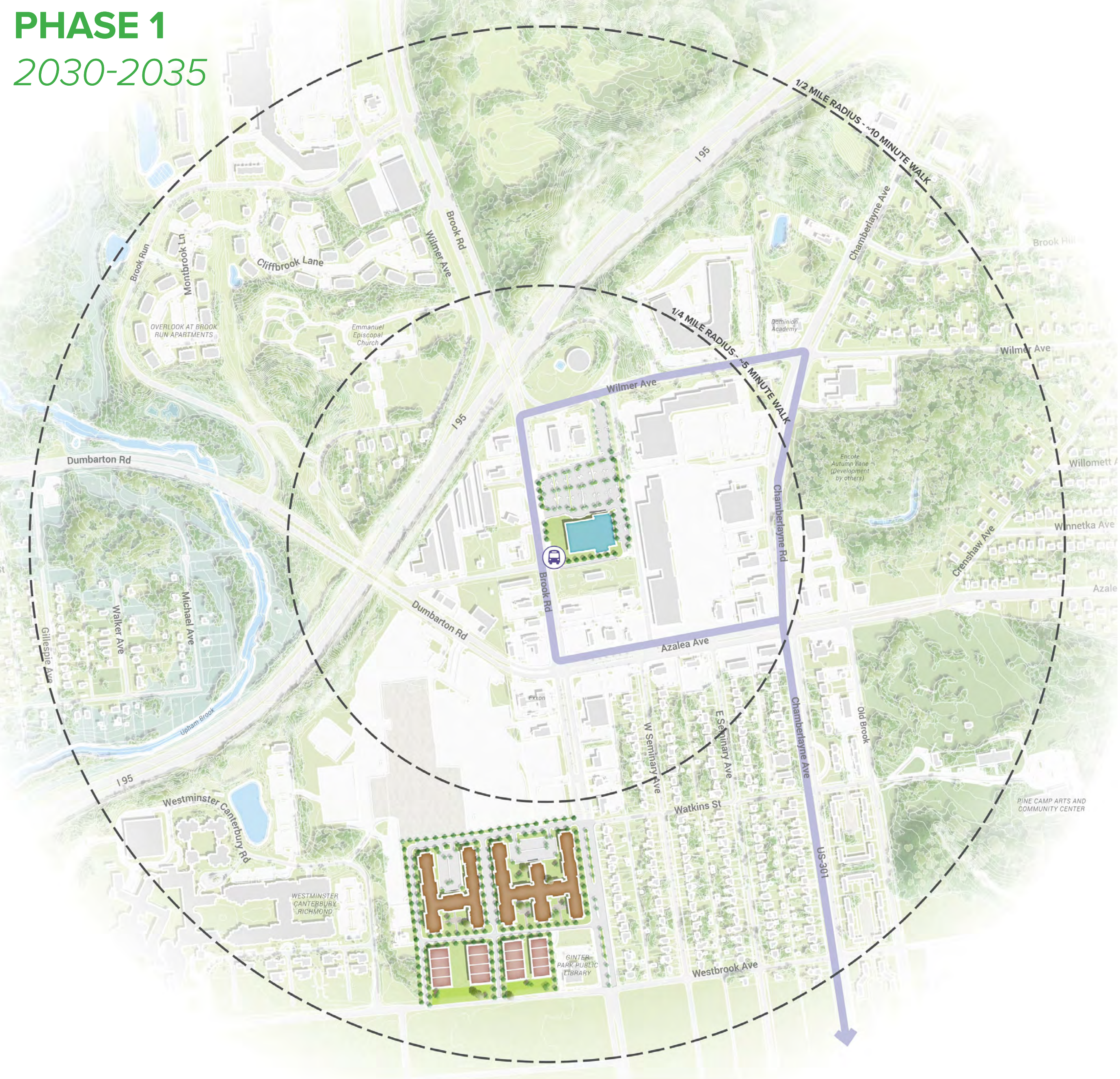


BROOK ROAD STATION

EXISTING CONDITIONS



PHASE 1 2030-2035



KEY PLAN



WHAT WE HEARD

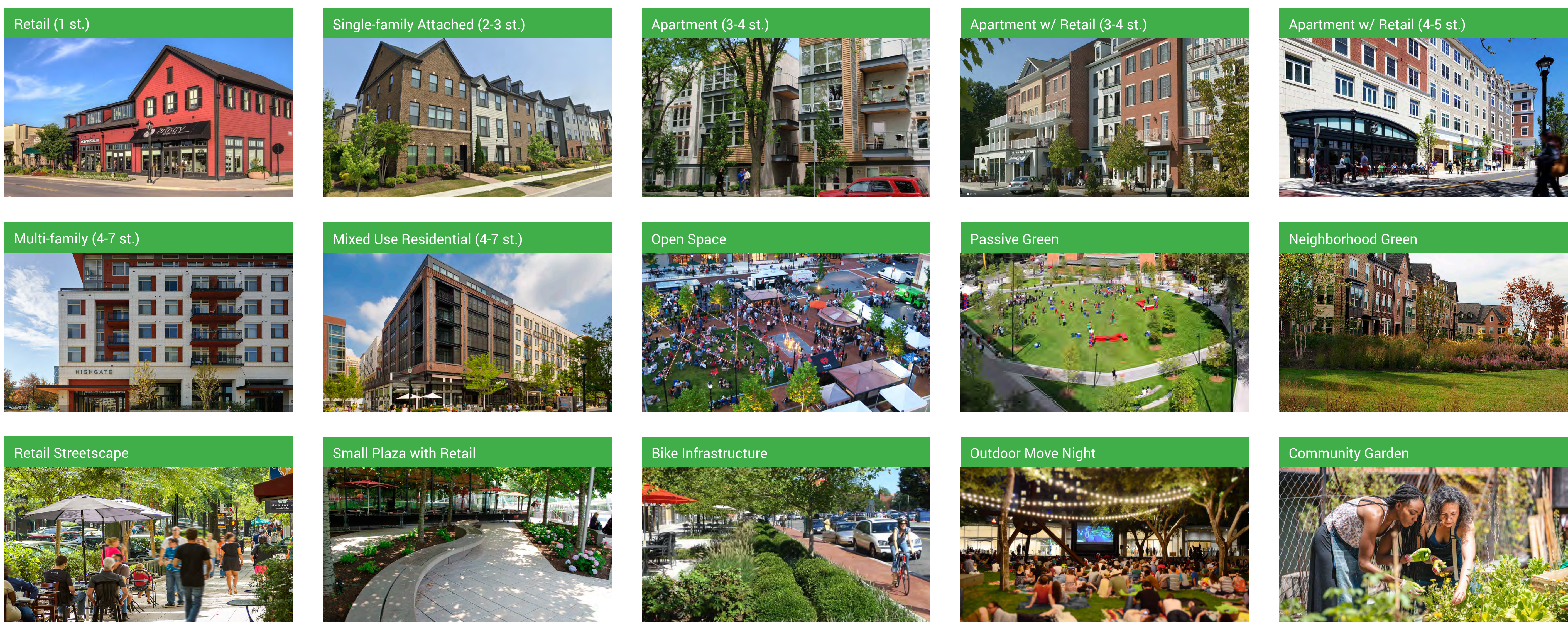
<p>REDEVELOPMENT POTENTIAL</p> <p>Azalea Mall and nearby vacant properties are prime redevelopment opportunities with higher-density, mixed-use potential.</p>	<p>CONNECTIVITY</p> <p>This station could connect to Henrico developments and serve as a high-demand transfer hub.</p>	<p>AMENITIES & EQUITY</p> <p>Access to everyday amenities and co-located community services, especially in this food desert, is desired.</p>
<p>ANCHOR STATION STRATEGY</p> <p>Azalea Mall and nearby vacant properties are prime redevelopment opportunities with higher-density, mixed-use potential.</p>	<p>CULTURAL & RECREATIONAL SPACES</p> <p>Theaters, cultural venues, and green spaces are desired. Underused land could be converted into parks at this site.</p>	<p>ACTIVE TRANSPORTATION & STREETScape</p> <p>Bike infrastructure and pedestrian-friendly retail streetscapes should be buffered from traffic.</p>

STATION TYPOLOGY

URBAN DESIGN	COMMERCIAL CORRIDOR
CONNECTIVITY	MOBILITY GAP
COMPARABLE STATIONS	
<p>STONEBRIDGE PLAZA</p> <p>Similar to this station, Stonebridge Plaza Station is a terminal station.</p>	<p>SOUTHSIDE PLAZA</p> <p>Similar to this station, Southside Plaza Station is a commercial corridor with large existing shopping centers.</p>

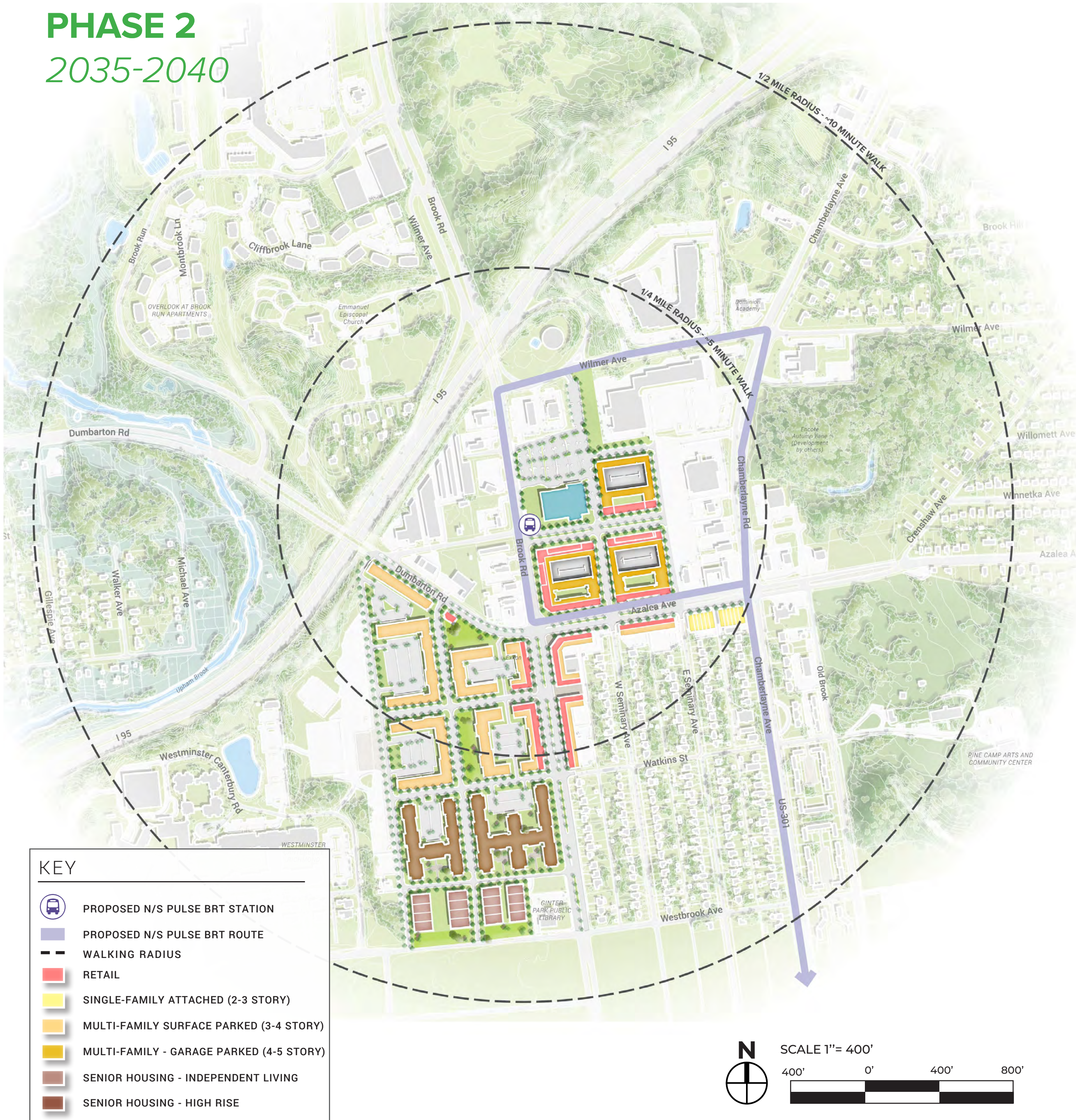
PRECEDENT IMAGES

Use your green dots to vote for your favorites

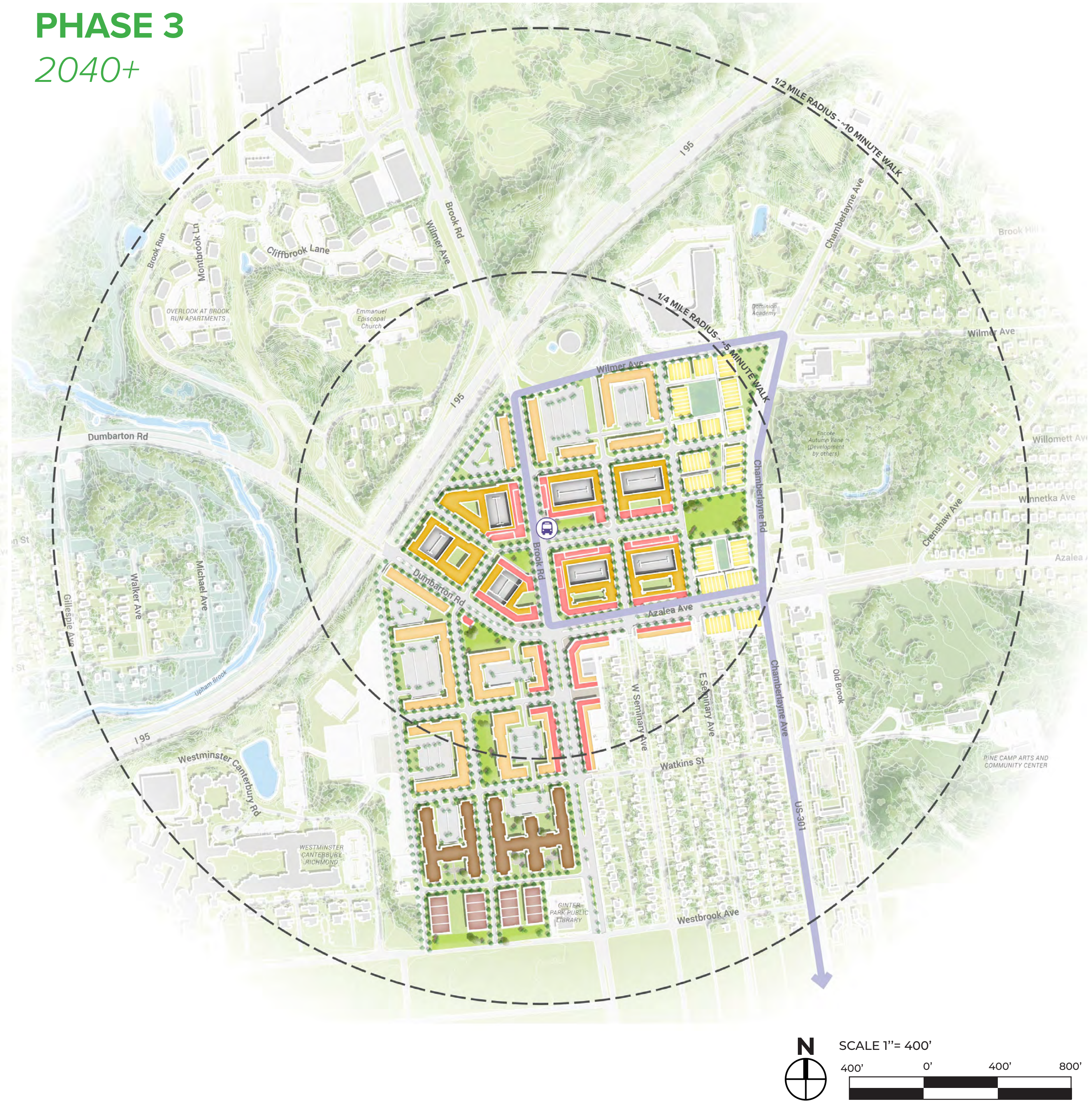


BROOK ROAD STATION

PHASE 2 2035-2040



PHASE 3 2040+



MULTIMODAL CONNECTIVITY

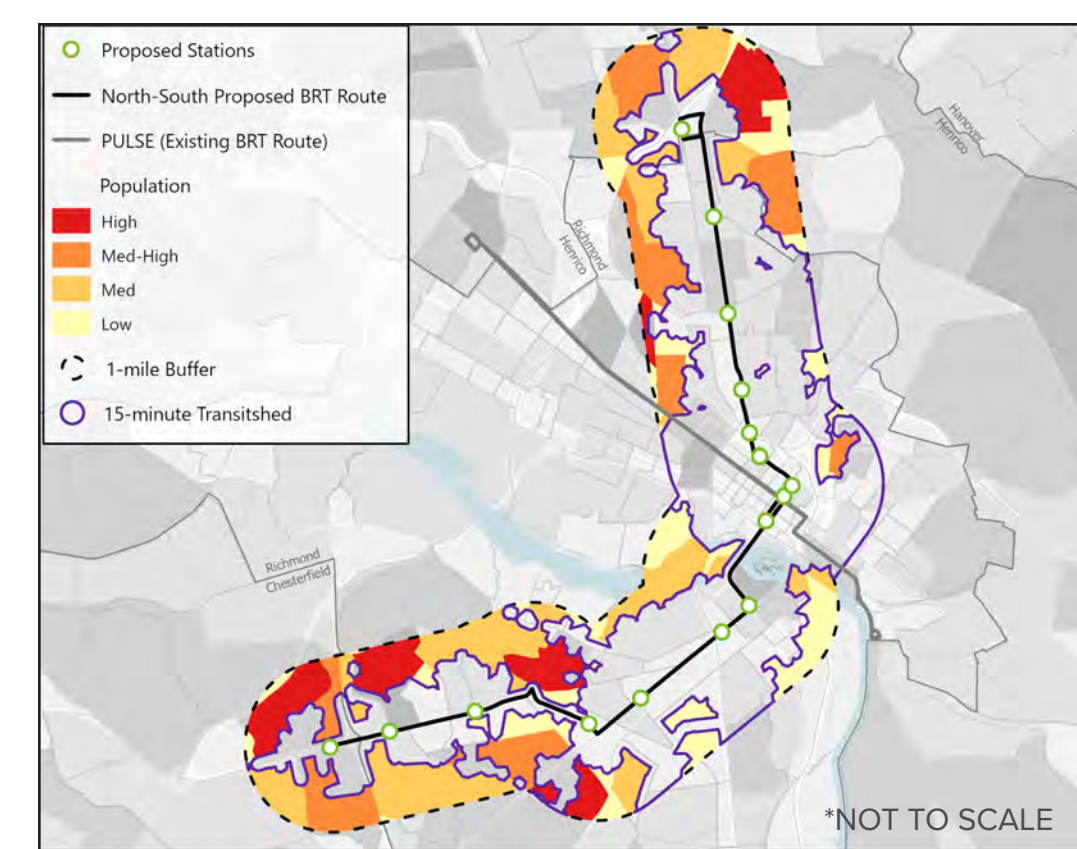
EXISTING - CONNECTIVITY CHALLENGES

- Interstate impedes connectivity
- Long crossings
- High capacity roads
- Large parking lots

PROPOSED - CONNECTIVITY IMPROVEMENTS

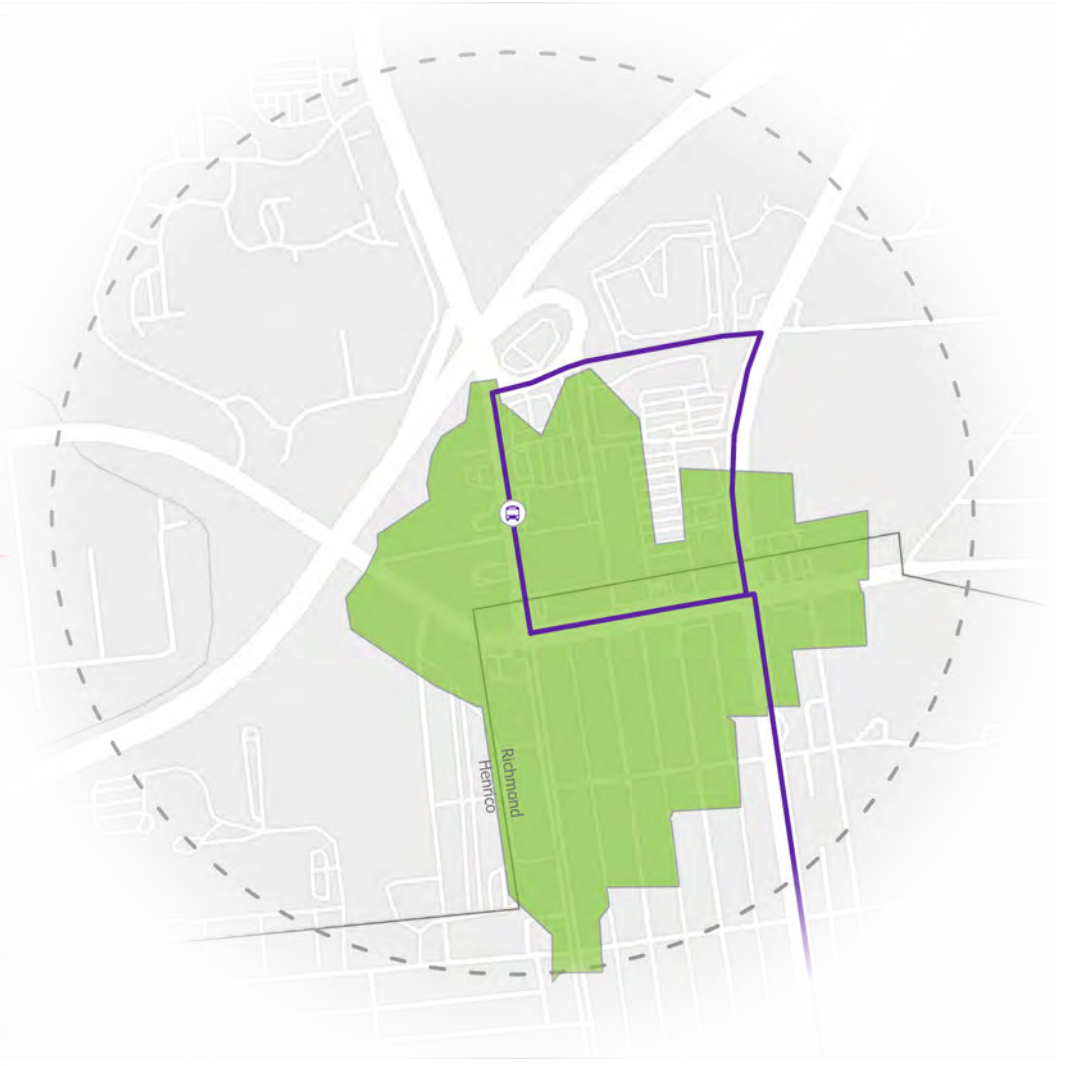
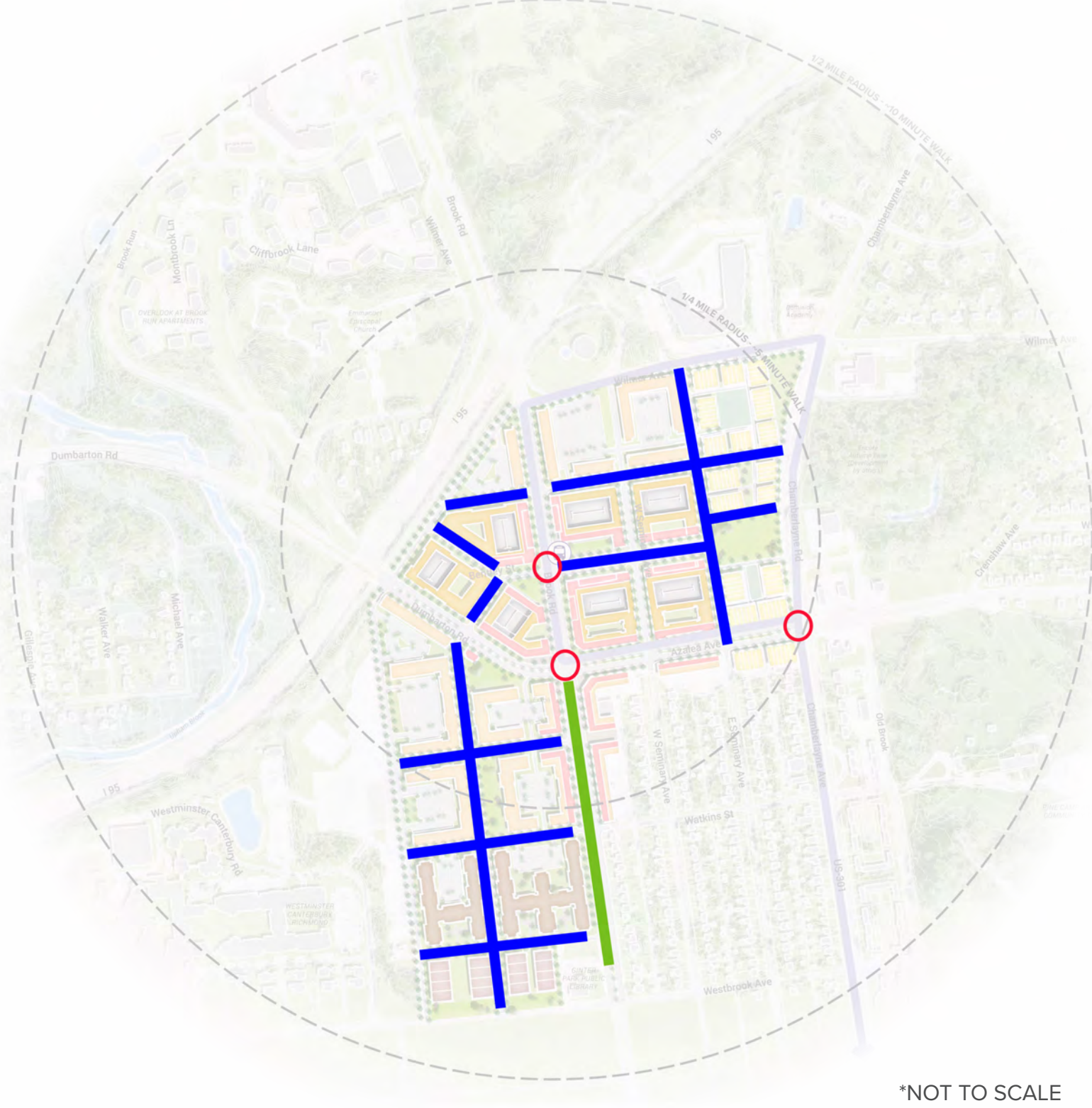
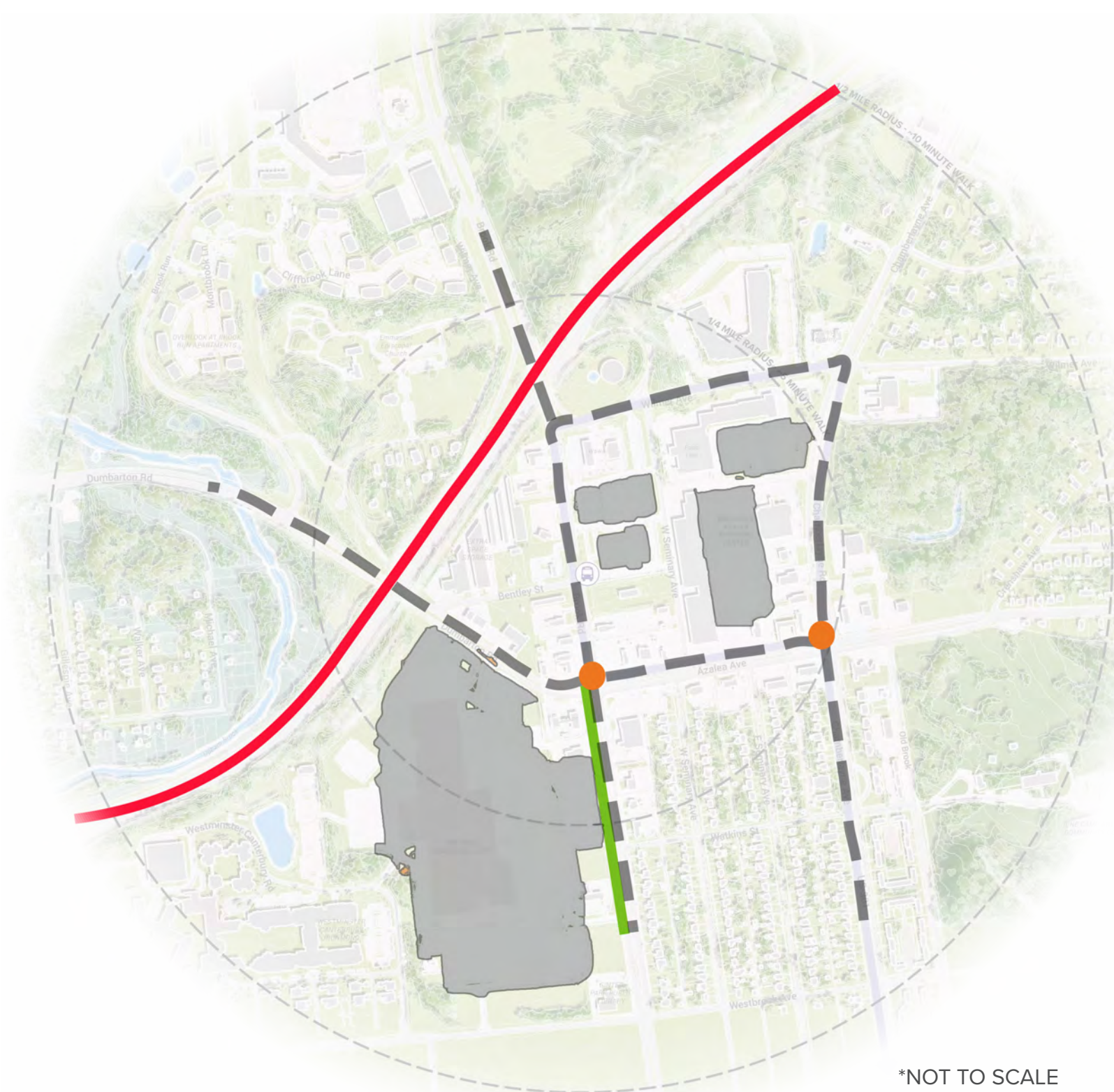
- Enhanced pedestrian crossings
- New streets substantially improve connectivity and safety

TRANSITSHED



BIKESHED

WALKSHED



COMMENTS / QUESTIONS

Use your sticky notes to leave comments or questions here - What did we miss/What do you like/dislike about this vision?