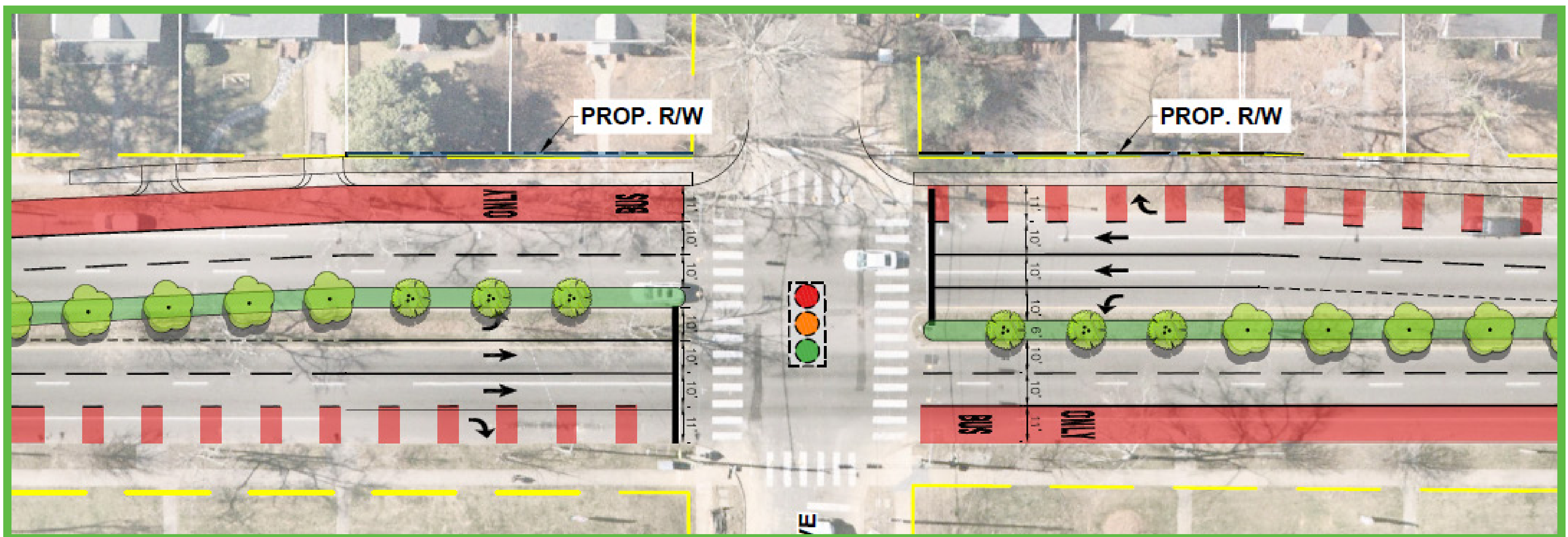


## Chamberlayne Avenue Median Street Trees



- **Original Concept:** The median was narrowed to accommodate curbside dedicated bus lanes without impacting adjacent residential and commercial properties.
- **What We Heard:** Community concerns regarding loss of approximately 250 existing trees in the median.
- **How We Responded:** We widened the median and will replant over 400 new trees on Chamberlayne Avenue and other locations on Northside in accordance with the City's Urban Forestry Division tree replacement guidelines.
- **Why This Matters:** Replanting trees in the median helps address gaps in the existing tree canopy and reduces heat island effect on Northside. By working with the City's Urban Forestry Division, we will ensure native tree species are selected that are well-suited for the median environment.

## Example Tree Species



Black Gum



Red Oak



Hackberry

Scan the QR code to visit the project website.



Scan the QR code to take the survey.

