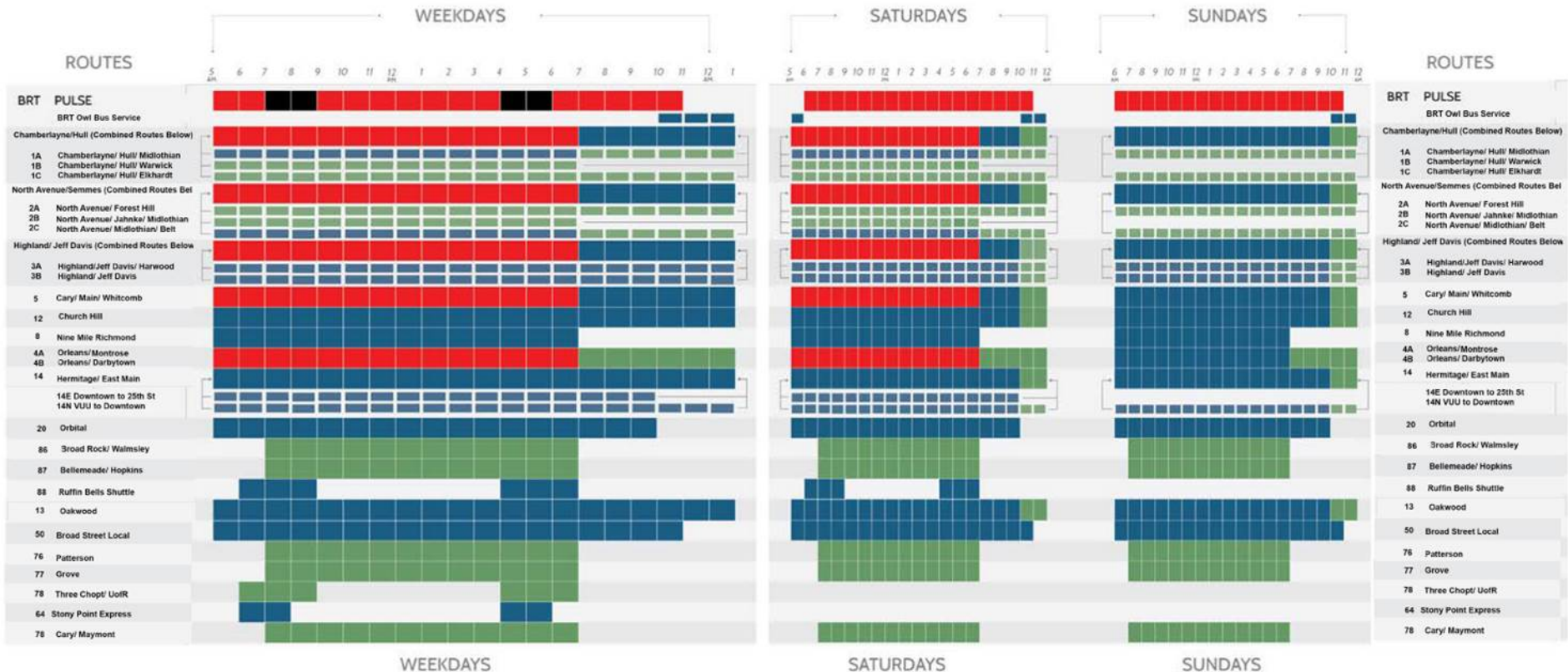


# Route Frequencies and Spans of Service



**HENRICO COUNTY ROUTES:**  
 With the exception of Route 7, GRTC routes that are planned and funded by Henrico County are not included in this table.

**FREQUENCY**

- 10 minute
- 15 minute
- 30 minute
- 60 minute

\* Route 64 - Stony Point Express:  
 The 64x is budgeted to have 4 trips each in the AM and PM peak periods under this plan.  
 The City and GRTC are working to find additional funding from other sources to provide 2 additional trips in both the AM and PM peak periods